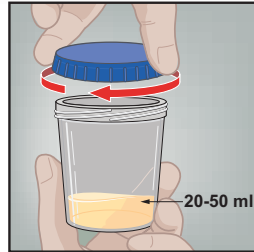
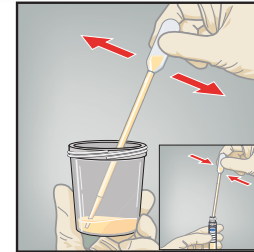


# Urine Specimen Collection (First Catch)

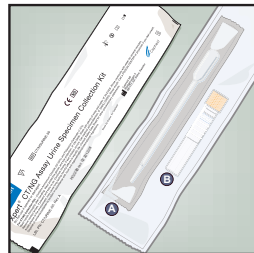
1 Direct patient to provide first-catch urine (20-50mL) into a urine collection cup.  
 Note: The patient should not have urinated for at least 1 hour prior. Patient should not cleanse the genital area prior to collecting specimen.



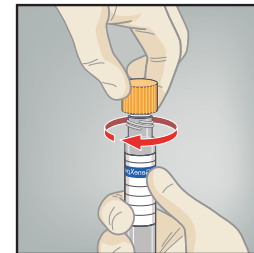
5 Transfer approximately 7mL of urine into the transport tube, using the disposable transfer pipette. The correct volume is marked by the black dashed line on the label.



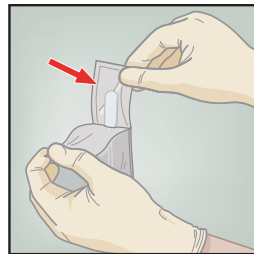
2 The Xpert® CT/NG Urine Specimen Collection kit contains  
 A Large transfer pipette  
 B CT/NG Urine Transport Reagent tube



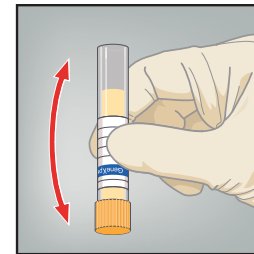
6 Replace the yellow cap on the transport tube and tighten securely.



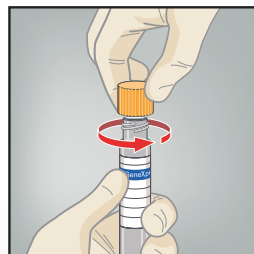
3 Open the package of disposable transfer pipette provided in the kit.



7 Invert the transport tube 3-4 times to ensure that the specimen and reagent are well mixed.



4 Remove the yellow cap from the transport tube.



8 Return the tube as instructed by your doctor, nurse or care-provider.  
 Note: Health care provider should label the transport tube with the sample identification information, including date of the collection, as required.

